

NEW YORK

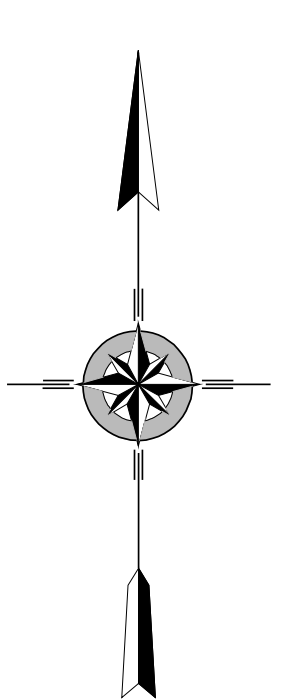
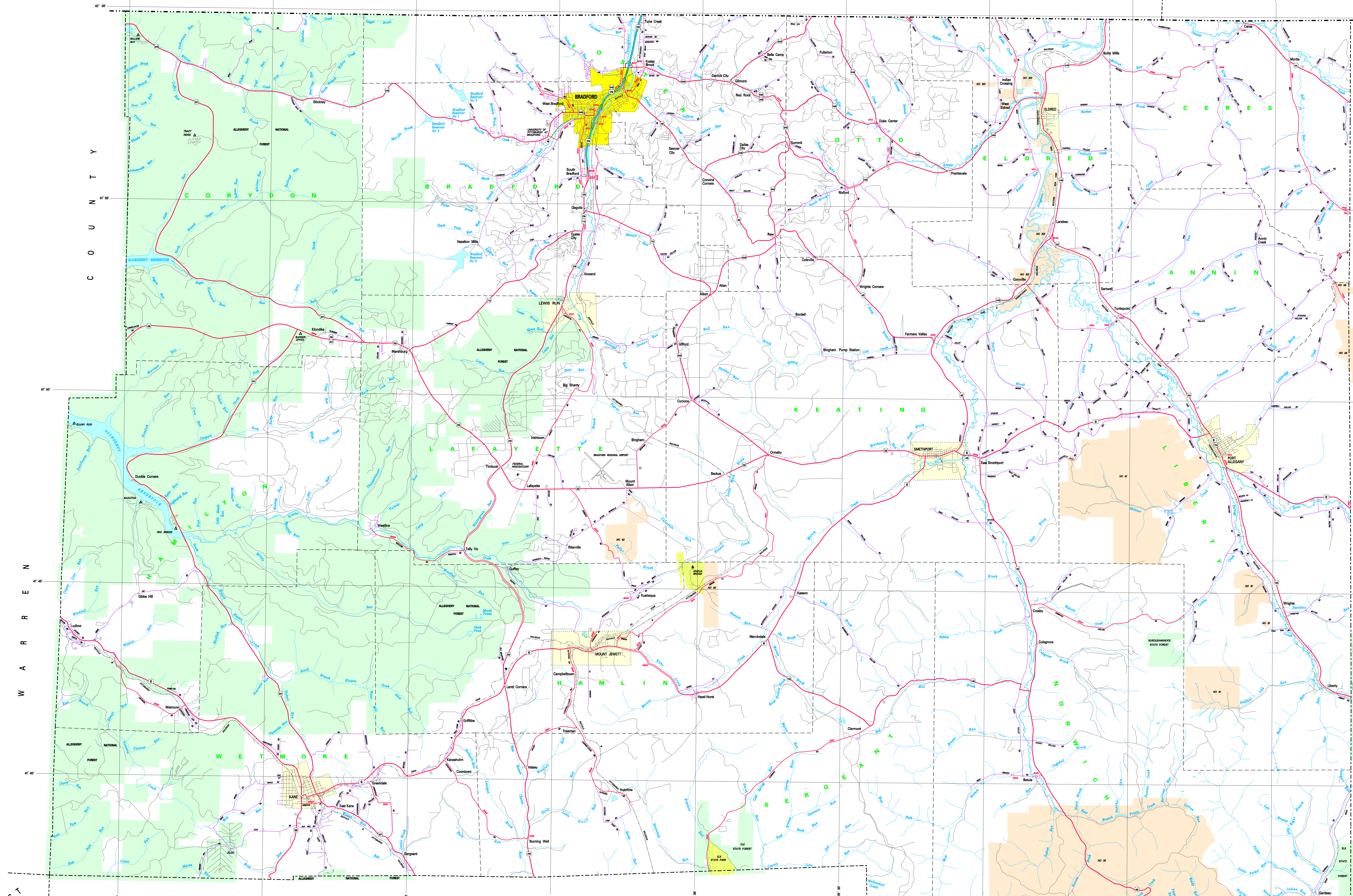
CATTARAGUS COUNTY

COUNTY

ALLEGANY COUNTY

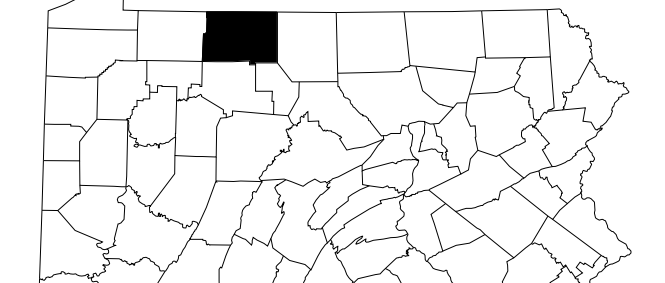
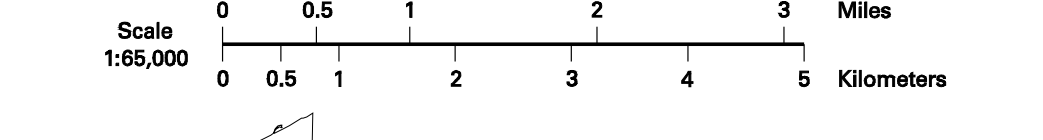
LEGEND

- FULLY CONTROLLED ACCESS HIGHWAY
- MULTILANE HIGHWAY
- TRAFFIC ROUTE
- BRIDGE
- STATE MAINTAINED BRIDGE
- TOWNSHIP ROAD
- TOWNSHIP ROAD (PAVED/UNPAVED)
- OTHER ROAD
- INTERSTATE INTERCHANGE NUMBER
- INTERSTATE TRAFFIC ROUTE
- UNITED STATES TRAFFIC ROUTE
- PENNSYLVANIA TRAFFIC ROUTE
- RAILROAD IN SERVICE
- RAILROAD ABANDONED/NOCK REMAINS
- STATE LINE
- COUNTY LINE
- TOWNSHIP LINE
- INCORPORATED CITY
- INCORPORATED BOROUGH
- STATE CAPITAL
- COUNTY SEAT
- OTHER COMMUNITY
- COLLEGE OR UNIVERSITY
- STATE POLICE FACILITY
- COURTHOUSE
- STATE ADMINISTERED HISTORIC PROPERTY
- FEDERAL/STATE INSTITUTION
- PRISON FACILITY
- POINTS OF INTEREST
- HOME MADE TRAIL
- HELIPORT
- MET AREA AND EMPLOY FACILITY
- VISIONING CENTER AND EMPLOY FACILITY
- STATE FIRE WATCHTOWER
- STATE FOREST NATURAL AREA
- STATE FOREST PICKUP AREA
- FEDERAL RECREATION SITE
- STATE PARK LAND (HEADQUARTERS)
- STATE GAME LAND AND NUMBER
- STATE AND FEDERAL FOREST LAND
- FEDERAL PARK/RECREATION LAND
- FEDERAL RESERVATION



2009
GENERAL HIGHWAY MAP
McKEAN COUNTY
PENNSYLVANIA

PREPARED BY THE
PENNSYLVANIA DEPARTMENT OF TRANSPORTATION
BUREAU OF PLANNING AND RESEARCH
GEOGRAPHIC INFORMATION DIVISION
IN COOPERATION WITH THE
U.S. DEPARTMENT OF TRANSPORTATION
FEDERAL HIGHWAY ADMINISTRATION



POPULATION OF COUNTY (2000 Census) 48,898
AREA OF COUNTY (SQ. MI.) 387
(SQ. KM.) 1,002
POLITICAL JURISDICTION - 140 IS DATUM

COPIES OF THIS MAP ARE AVAILABLE AT NOMINAL COST
CONTACT:
PENNSYLVANIA DEPARTMENT OF TRANSPORTATION
SALES STORE
HARRISBURG, PENNSYLVANIA 17105 - 2028
TELEPHONE: (717) 787-6268

USERS NOTING ERRORS OR OMISSIONS ON THIS MAP
ARE URGED TO REPORT THEM TO:
PENNSYLVANIA DEPARTMENT OF TRANSPORTATION
BUREAU OF PLANNING & RESEARCH
GEOGRAPHIC INFORMATION DIVISION
P.O. BOX 3888
HARRISBURG, PENNSYLVANIA 17105 - 3888
E-MAIL: gv-geom@pa.gov

